



Bay County Elections

100 Years and Counting

PRESENTED BY MARK ANDERSEN

The background of the image is a close-up, slightly angled view of the American flag. The blue field with white stars is on the left, and the red and white stripes are on the right. The flag appears to be waving or draped, creating a sense of movement. The text is overlaid on the center of the flag.

**Please stand
for the Pledge
of Allegiance**



The Early Years

1913 - 1950



Origin of Bay County

- ✦ **Bay County** was formed from portions of Calhoun, Washington & Walton County.
- ✦ Election was held **June 7, 1913**.

Elected Officials



- ✦ **County Judge** – D.K. Middleton
- ✦ **Sheriff** – W.A. Brown
- ✦ **Clerk Circuit Court** – W.K. Marshall
- ✦ **Superintendent of Public Instruction** – E.L. Brigman
- ✦ **County Surveyor** – Jo. P. Haley
- ✦ **Assessor of Taxes** – A.M. Douglas
- ✦ **Supervisor of Registration** – A.F. Driskall
- ✦ **Harbor Master** – J.E. McKenzie

County Commissioners

- ✦ **District 1** – R.L. McKenzie, *Panama City*
- ✦ **District 2** – Thos E. Crawford, *Cromanton*
- ✦ **District 3** – L.C. Gay, *Lynn Haven*
- ✦ **District 4** – Thos B. Young, *Youngstown*
- ✦ **District 5** – A.J. Gainer, *Southport*

County Board Public Instruction

- ✦ **District 1** – Allen H. Miller, *Millville*
- ✦ **District 2** – Robert D. Murry, *Youngstown*
- ✦ **District 3** – Wm. B. Merrit, *St. Andrews*


Justice of the Peace

- ✦ **District 1** – M.C. Hall, *Panama City*
- ✦ **District 2** – Jno. Sturrock, *St. Andrews*
- ✦ **District 3** – J.O. Harrison, *Millville*
- ✦ **District 4** – W.J. Bell, *Millville*
- ✦ **District 6** – Jno. E. Smith, *Cook*
- ✦ **District 8** – W.L. Pridgen, *Bellisle*
- ✦ **District 11** – Robert W. Beach, *Lynn Haven*
- ✦ **District 12** – J. H. Hogen, *Majette*
- ✦ **District 14** – Alexander Crosby, *Youngstown*
(resigned 06-19-1914)
- ✦ **District 15** – M.W. Nizon, *Fountain*
- ✦ **District 17** – WJ Dykes, *Southport*
- ✦ **District 20** – I.G. Melvin, *West Bay* (resigned 02-02-1914)

Constables:

- ✦ **District 1** – Jesse A. Thomas, *Panama City*
(resigned 7-22-1914)
- ✦ **District 3** – John. W. Williams, *Millville*
(resigned 1-9-1914, D.A. McMilliam
Commissioned 02-11-1914)
- ✦ **District 5** – H.E. Hickamn, *Panama City*
(resigned 03-28-1914)
- ✦ **District 8** – B.H. Dickson, *Bellisle*
- ✦ **District 20** – C.D. Ribbles, *West Bay*

1st Supervisor of Registration

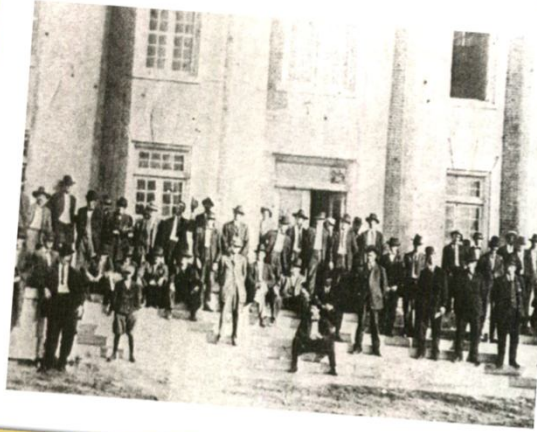


- ✦ The 1st elected Supervisor of Elections, which was then known as Supervisor of Registration, **A.F. Driskall**, refused to serve and **Ray E. Palmer** was appointed.
- ✦ His term expired July 7, 1914 and **C.A. Mashburn** was commissioned July 27, 1914 for the remaining two years.

County Seat in Panama City.



- ✦ **May 7, 1914** an election was called to determine the County Seat. **843 Votes were cast.**
- ✦ A runoff election had to be held between St. Andrews and Panama City. 908 votes were cast in which **Panama City won 508 to 400 votes.**
- ✦ Officials had to hold meetings and operate their offices in many temporary facilities around Panama City until a court house was built October 20, 1914.



County Courthouse

The Bay County Courthouse was built in 1915, later burned in 1920 but was reconstructed served as home to the Supervisor of Elections Office for many years.

In the Beginning

✦ **"The Bad..."**

- ✦ Voters were required to pay a poll tax in order to vote.
- ✦ You were required to own property in order vote.
- ✦ African Americans and women did not have the right to vote.

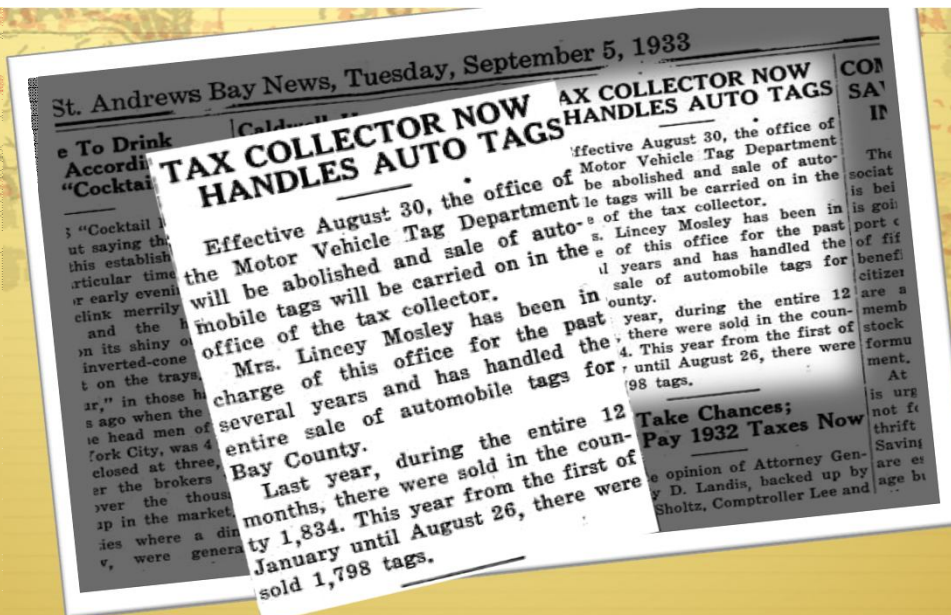
✦ **"The Ugly..."**

- ✦ Bay County's 1st Sheriff was charged with embezzlement and removed from office.
- ✦ His replacement was killed in a gun fight and Frank Nelson had to finish his term.
- ✦ Bay County's 1st Superintendent of Schools ran away with his secretary and resigned.
- ✦ F.M. Nelson had to finish his term.

"The Good..."

In 1920 Mrs. Lillian West was the 1st woman in Bay County to register to vote.





1st Female Supervisor of Registrations

- ✦ Lincey Mosley became the interim Supervisor of Registrations in 1925 when John Williams resigned. In 1931 she became the 1st female to be elected Supervisor of Registrations in Bay County and served until 1933.
- ✦ According to a St. Andrews Bay Newspaper article, prior to 1933 Mrs. Mosley was also responsible for the sale for all automobile tags in the area.
- ✦ In 1933 sale of automobile tags was moved to the office of Tax Collector where it remains today.

1926 Democratic Primary Dummy Ticket

Bay County was primarily
a democratic county in
the beginning.

PRIMARY DUMMY TICKET 1926

Democratic Party

PRECINCT NUMBER 1, BAY COUNTY.

INSTRUCTIONS: To vote for any candidate, make a cross (X) in the square in the appropriate column, according to your choice, at the right of his name. Vote your first choice in the first column; vote your second choice in the second column.

If there is no second column at the right of a name, vote your first choice only. Do not vote more than one choice for the same candidate.

FOR UNITED STATES SENATOR.

Vote for one First Choice and one
Second Choice:

JERRY W. CARTER

DUNCAN U. FLETCHER

JOHN A. VAN VALZAH

First Choice	Second Choice
<input type="checkbox"/>	<input type="checkbox"/>
<input type="checkbox"/>	<input type="checkbox"/>
<input type="checkbox"/>	<input type="checkbox"/>

FOR REPRESENTATIVE IN CONGRESS,
THIRD CONGRESSIONAL DISTRICT

Vote for one First Choice:

J. H. SMITHWICK

TOM A YON

<input type="checkbox"/>

FOR JUSTICE OF THE SUPREME COURT,
THIRD GROUP. UNEXPIRED TERM.

Vote for one First Choice:

FRANCIS B. CARTER

LOUIE W. STRUM

<input type="checkbox"/>

FOR RAILROAD COMMISSIONER,
FIRST GROUP.

Vote for one First Choice and one Second Choice:

R. HUDSON BURR

R. L. EATON

EBENEZER JACKSON HARRIS

<input type="checkbox"/>	<input type="checkbox"/>
<input type="checkbox"/>	<input type="checkbox"/>
<input type="checkbox"/>	<input type="checkbox"/>


FOR RAILROAD COMMISSIONER,
SECOND GROUP.

Vote for one First Choice:

EUGENE S. MATTHEWS

<input type="checkbox"/>

Josh Mashburn – 29 years of service.



- ✦ In 1932 **Josh Mashburn** was elected as Supervisor of Registration and continued to **serve until 1961** when he passed away.

1st African American voter



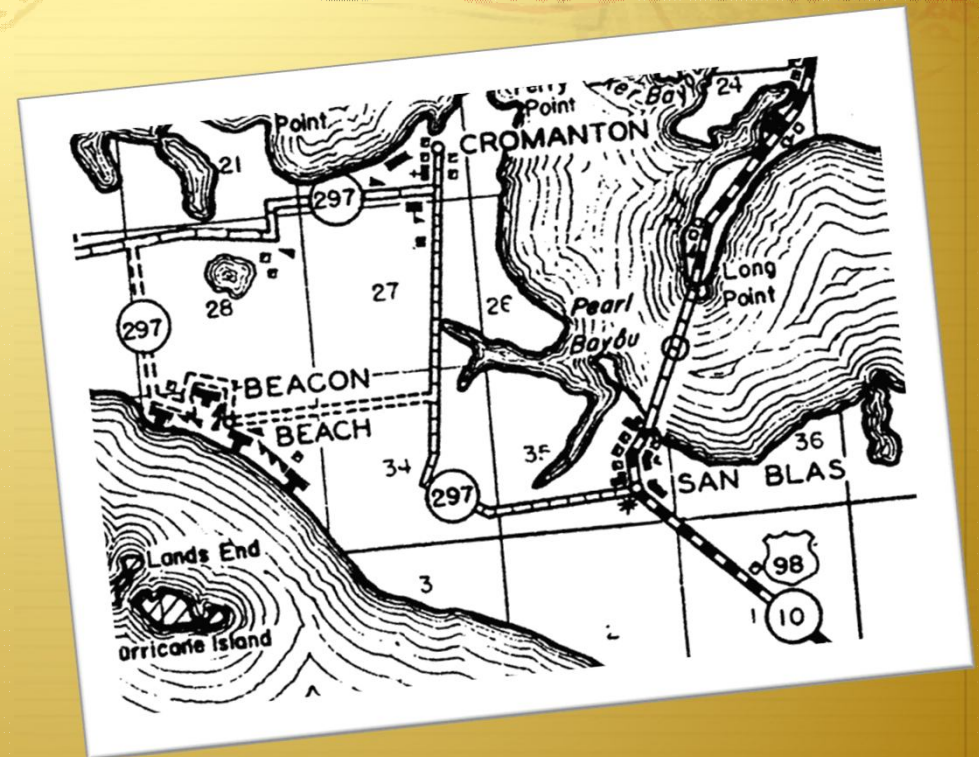
- ✦ 1st recorded African American who voted in Bay County was Jim Cooper in 1946.

Early Polling

- ✦ In the early years, Polling locations were held inside homes and businesses and even garages.

Former Precincts

- ✦ Some precinct areas are no longer towns like Cromanton, San Blas, and Farmdale.
- ✦ In 1941 Tyndall Air Force Base was built in their place.



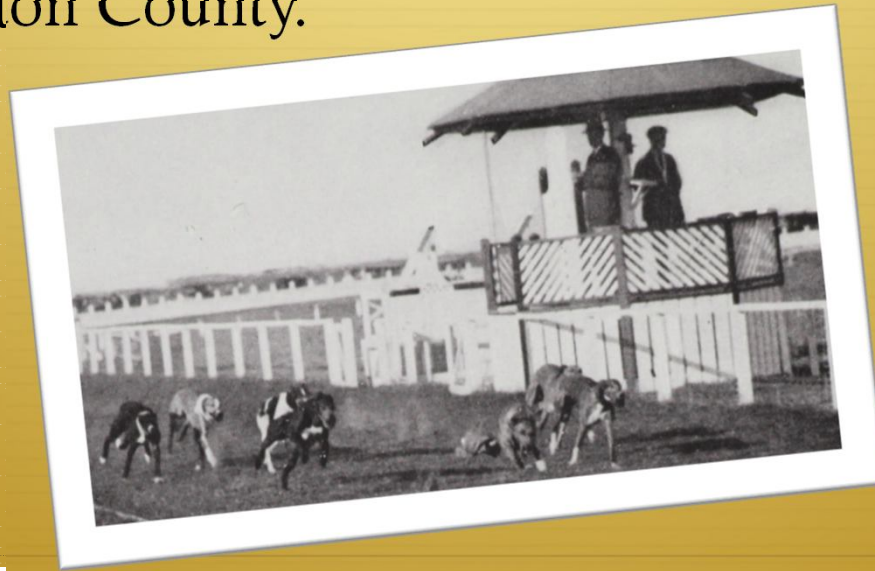
1st Republican Primary



- ✦ May 6th, 1952 was the 1st Republican Primary in Bay County.
- ✦ Up until then there were only Democratic Primaries held in Bay County.
- ✦ It was a Governor's Race and 19 votes were cast.

Greyhound Racing

- ✦ October 9, 1952 Bay County Voted not to allow Greyhound racing, which was later allowed in Washington County.





Last 50 years
1963-present

Gladys Chapman – 36 years of service.

- In 1961 **Gladys Chapman** was appointed to serve out Mr. Mashburn's term as Supervisor of Registration.
- Mrs. Chapman was well known and well liked throughout the community.
- She was **reelected 8 times** and retired in 1997 after 36 years in office.

During her term, Mrs. Chapman saw many changes.

- In **1965 Voter's Rights Act** was signed into Congress by President Lyndon B. Johnson.
- This Act prohibits states from imposing an **"voting qualifications or prerequisites to voting, or standard, practice, or procedure... to deny or abridge the right of any citizen of the United States to vote on account of race or color."**
- In Bay County African Americans were allowed to vote as early as **1942** even though the voter's Rights Act wasn't passed until 1965.

Bay County Court House

- In 1980 it was completely renovated and a new south wing was added that was mostly occupied by the Supervisor of Elections Office.



Supervisor of Elections Office

- In 2002 The Supervisor of Elections Office relocated to its new home on Mosley Drive in Lynn Haven.



Melanie Williams Boyd

- In 1997 Melanie Williams Boyd was elected Supervisor of Elections and was in office only 1 term.
- Melanie was one of thirteen candidates to run for the Supervisor of Elections office.

Mark Andersen

- In 2000 I was elected and continue to proudly serve you as Supervisor of Elections.



Vote in Honor of a Veteran



- Created by Mark Andersen.
- Help students understand the sacrifices veterans have made to uphold the FREEDOM we have to live in a democratic society.
- Create an awareness in young adult voters of their responsibility to PRESERVE DEMOCRACY by voting in all elections.

Help America Vote Act

- In 2002 the **Help America vote Act** was signed into law by President Bush. This Bill was drafted in part by the controversy regarding the 2000 Presidential Election.
- HAVA mandates that all states **update their standards** of election procedures including election equipment, poll worker training and registration processes.

Supervisor of Elections Office

- In the summer of 2009, the office moved to its present location in the government Building here on 11th Street which features the latest in technology, security and much more space to meet the needs of the growing community of Bay County.



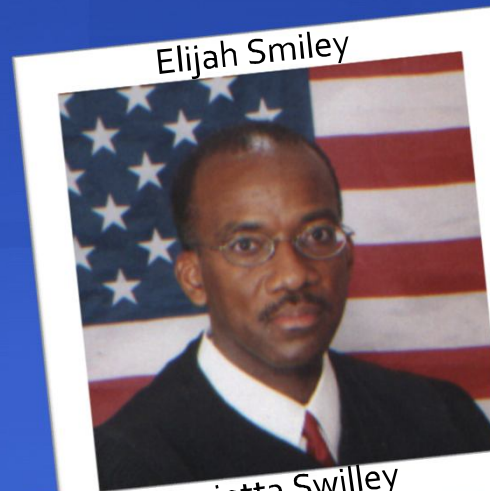
iVotronic ADA Ballot

- Dr. Wood – First Person to vote on the iVotronic ADA for an audio touch screen ballot.



1st African American Elections Officials in Bay County

- Tim Brooks, Panama City Commissioner
- Sharon Sheffield, Mayor of Lynn Haven
- Henrietta Swilley – 1990 First Bay County School Board Member
- The Honorable Elijah Smiley, 1995 became County Judge, 2006 elected Circuit Judge, 14th Judicial Circuit.
- George Smith, Callaway City Commissioner



Elijah Smiley



Sharron Sheffield



Henrietta Swilley



George Smith

Brief History of Voting Machines

Early Voting Machines

Central Scanner & Tabulator Machines

- Modern Equipment
- Designed to handle ballots by hand to begin use in 1892—early models were slow and cumbersome.
- Its size and complexity made it difficult to use in a polling place.
- By the 1950s, the machines were being used nationwide, more than 300 ballots per minute.



Current Elected Officials Bay County

County Board of Supervisors - District

1. **Timothy McKeithen**
Sheriff – Frank McKeithen
2. **George Fairclinton**

3. Billy McKeithen
Property Appraiser – Dan Sowell

4. **Joey McKeithen**
Tax Collector – Peggy Brannon
5. **Mike McKeithen**

School Superintendent – Bill Husfelt

Current Elected Officials Municipalities

Wahkiakum County

Mayor - Thomas Abbott
Council Member John Reichard
Commissioner Ward 1 - Dennis DeLapp
Ward 2 - Rick Russell
Ward 2 - Pam Henderson
Ward 3 - David Stano
Ward 3 - Keith Berry Pollock
Ward 4 - Ralph Hollister

Pyram City

Mayor - Greg Brundnicki
Commissioner Ward 1 - John Kady
Commissioner Seat 1 - Rodney Friend
Ward 2 - Kenneth Brown
Seat 2 - Antonius Barnes
Ward 3 - Billy Rader
Seat 3 - Roger Schad
Ward 4 - Mike Nichols
Seat 4 - Joseph Ashbrook

Thank You from the office of Mark Andersen!



& Thank you from our sponsors!

Bay Solutions
Beef O Brady's
Bill Cramer Chevrolet
Burke & Blue
Captain's Table
Centennial Bank
Chili's
City of Panama City
City of Panama City Beach
City of Parker
City of Springfield
Curry Printing
Culligan water
Club Sun
Fox 28
French Twist Salon

Fridays
George Smith
Gift Basket Designs
Grease Pro
Innovations
Jasmine's
Jessica Gilbert
Jenifer Greene/Mary Kay
John Robbins
Kent Forest Lawn/Evergreen
Larosa Nails
Little Debbie
Lisa Womack
Nichols & Associates
Panama City Toyota
Panhandle Educators Federal

Credit union
Posh Nails
R&S Investments
Raley's Relics
Sea Breeze Winery
Selter Management
Sew Perfect
Sonic
Three Brothers From Italy
Pizza
Triple J's
Trudy Waterstradt
Waterworx